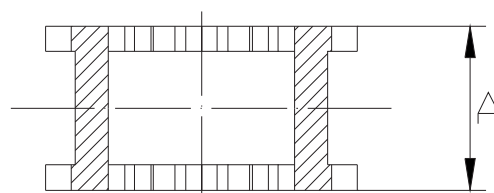
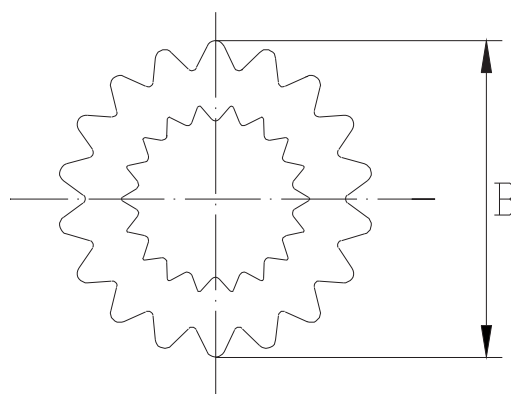


INSERTO ELASTICO

CODICE	A	B	SERIE
IR/JX3	25,50	48,00	1
IR/JX4	32,00	58,00	1
IR/JX5	39,50	75,00	1
IR/JX6	48,00	95,00	1
IR/JX7	56,00	110,00	1
IR/JX8	64,00	129,00	1
IR/JX9	76,00	152,00	1
IR/JX10	87,00	179,00	1
IR/JX11	102,00	208,00	1
IR/JX12	119,00	242,00	1
IR/JX13	140,00	284,00	1
IR/JX14	165,00	333,00	1
IR/JX16	220,00	455,00	1



Nota:
in gomma nera monoblocco JX,
in gomma nera aperta JXC,
in hytel arancione monoblocco JH,
in hytel arancione in due metà SH.